

## How to: Install and Setup Pulse Secure on your Personal Computer

The Pulse Secure SSL VPN client produced by Pulse Secure, LLC, is the preferred application for connecting to the San Jacinto College SSL VPN. The Pulse client allows you to access San Jac’s SSL VPN directly without having to open and log in through a web browser. The Pulse Secure client is the official replacement for the Network Connect client used at San Jac.

### **Instructions (Install & Setup Pulse Secure)**

1. To install Pulse Secure on your personal computer, please click on the appropriate link for your computer operating system from the list below:

- a. **Windows 32-bit:**

<https://secure.sjcd.edu/dana-na/jam/getComponent.cgi?command=get;component=PulseSecure;platform=x86>

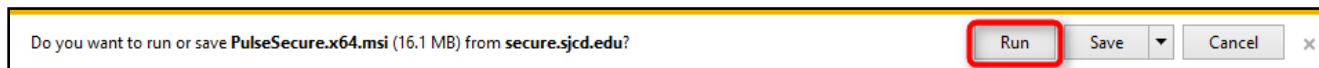
- b. **Windows 64-bit:**

<https://secure.sjcd.edu/dana-na/jam/getComponent.cgi?command=get;component=PulseSecure;platform=x64>

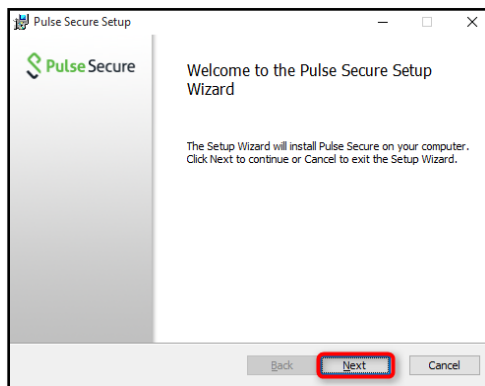
- c. **Mac**

<https://secure.sjcd.edu/dana-na/jam/getComponent.cgi?command=get;component=PulseSecure;platform=Macintosh>

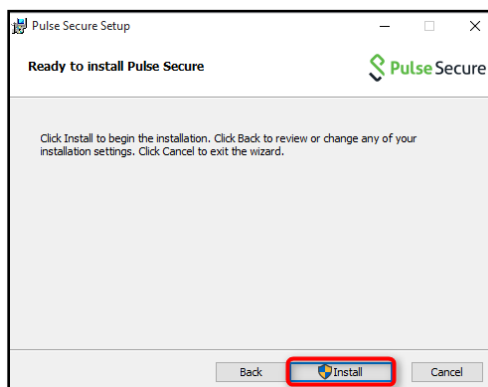
2. Download and run the application.



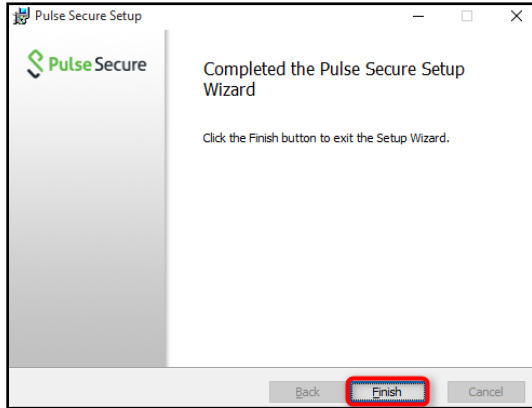
3. The Pulse Secure Setup Wizard will appear. Click **Next**.



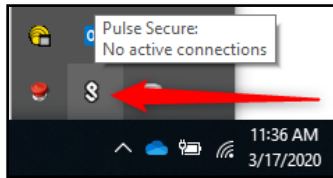
4. Click **Install** to begin the installation.



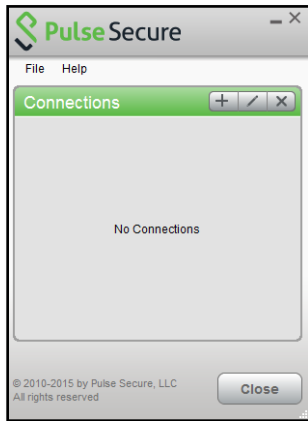
5. Click 'Yes' if you receive a message asking if you want to allow this app to install software on your PC.
6. Please allow a few minutes for the software to install on your computer.
7. Click the **Finish** button to exit the Setup Wizard.



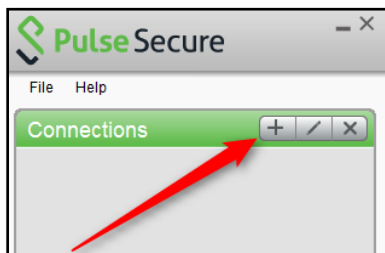
8. Once you exit the Setup Wizard, you should see an icon similar to the image shown below.



9. Double-click on the icon and the Pulse Secure pop-up window will appear.



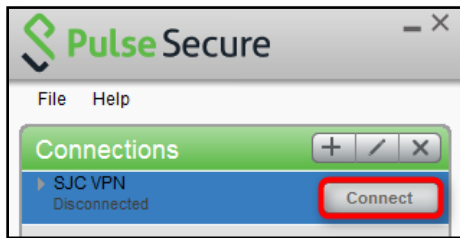
10. Click the '+' button to create a new connection.



11. For the type of connection, select **Policy Secure (UAC) or Connect Secure (VPN)**.
12. For the name, you can type in 'SJC VPN'.
13. For the Server URL, type in: **secure.sjcd.edu**
14. When you are finished, click **Add**.



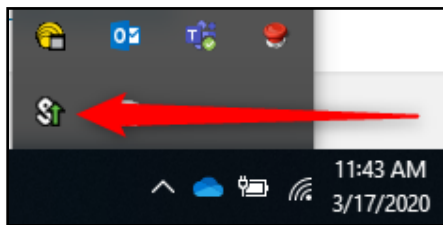
15. Once you are brought back to the Pulse Secure pop-up window, click **Connect**.



16. You will be asked to log in.
  - a. Your username will be your firstname.lastname
  - b. Your password will be your network password.
17. Click **Save Settings**.
18. Click **Connect**.



19. The icon in your system tray will now indicate that you are connected to the College network.



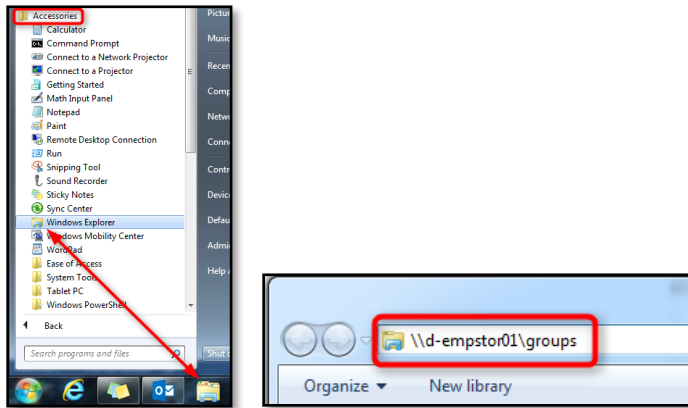
Once you are connected to the College network, you may now use applications and websites as if you were sitting in your office on campus. This includes network shares, remote desktop, internal page, etc.

**Instructions (How to Access Network Drives)**

The College network drives such as G, H, and P are not mapped automatically to your personal computer. You will need to manually map or access the drive yourself.

To access a network drive, you can perform one of the following steps:

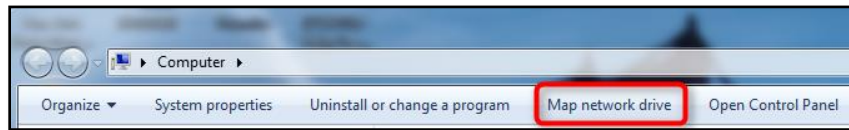
1. Open Windows Explorer (Windows 7) or Windows File Explorer (Windows 10) and type in the network drive path you wish to access



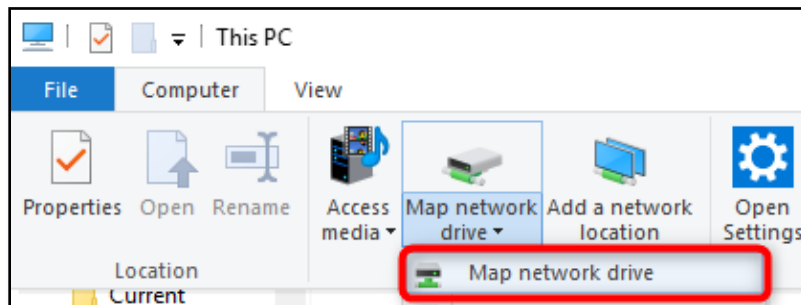
2. You can also choose to map the network drive(s) manually on your PC or Mac.

**Windows OS:**

- a. Depending on your Operating System, double-click the **Computer** or **This PC** icon on your desktop
- b. Click **Map network drive**



(Windows 7)



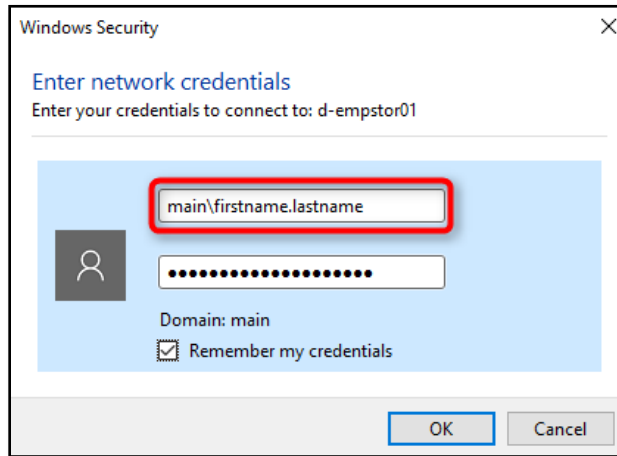
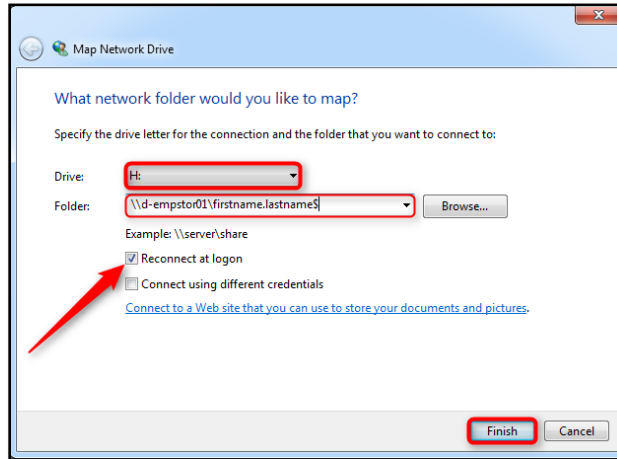
(Windows 10)

- c. Select the drive letter you wish to map (G, H, P, etc.)
- d. Type in the particular share/drive you would like to map.

Examples of drives are listed below:

- |                                    |                    |
|------------------------------------|--------------------|
| \\d-empstor01\groups\              | for the "G: drive" |
| \\district\public\                 | for the "P: drive" |
| \\d-empstor01\firstname.lastname\$ | for the "H: drive" |

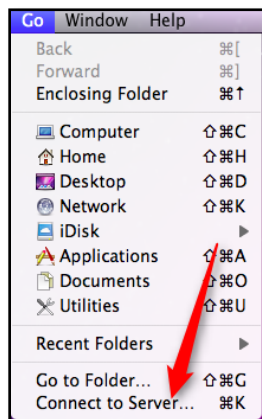
- e. Select **Reconnect at logon**.
- f. Click **Finish**.



**Note:** If you are prompted to enter your network credentials, make sure you include the domain in the username. For example: main\firstname.lastname

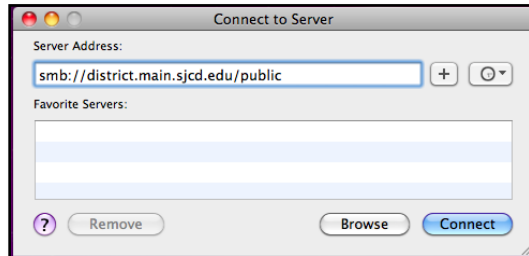
**Mac:**

- a. Click **Go** and then click **Connect to Server**.

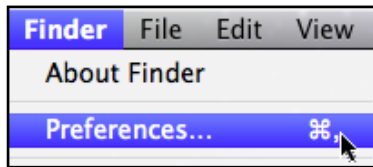


- b. In the 'Server Address' field, type in the particular share/drive you would like to map. Examples of drives are listed below:

smb://fshome.main.sjcd.edu/Groups for the "G: drive"  
 smb://district.main.sjcd.edu/Public for the "P: drive"  
 smb://fshome.main.sjcd.edu/firstname.lastname\$ for the "H: drive"



- c. Click **Connect**.  
 d. If you have access to the share, it should mount on your desktop immediately. If not, click on **Finder**, select **Preferences** and ensure that the **Connected Servers** checkbox is checked under the General tab.

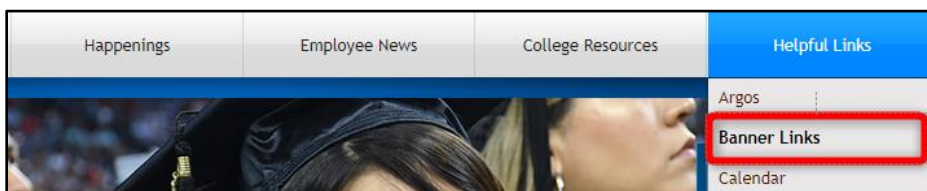


**Notes:**

- If an authentication window appears, you will need to enter your network credentials to access that specific share.
- The G and P drives will take some time to populate when their windows are opened for the first time due to the amount of information stored on them.

**Instructions (How to access Banner)**

With your computer connected to the College network via Pulse Secure, please visit <http://internal.sanjac.edu/>. Click "Helpful Links" followed by the "Banner Links". Click "PROD" under AppNav.



**Instructions (How to Create a Remote Desktop Connection [Windows OS])**

1. Click the **Start** button and/or
2. In the 'Search Programs and Files' (Search the web and Windows) field type in **mstsc**.

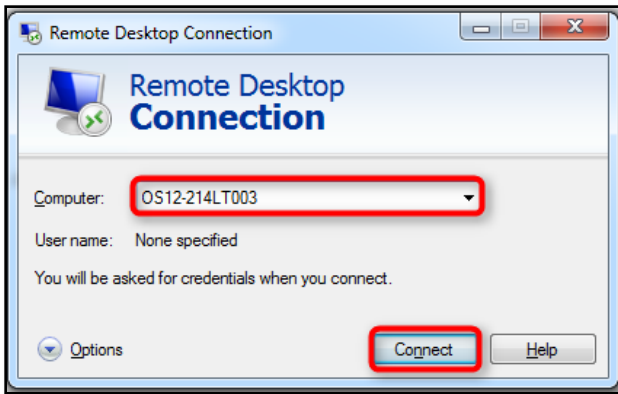


(Windows 7)



(Windows 10)

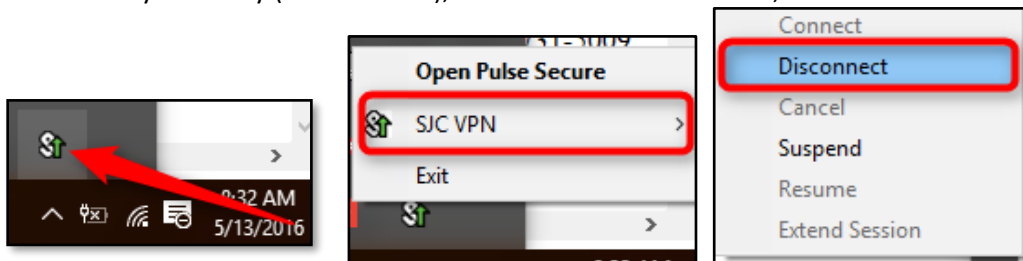
3. The Remote Desktop Connection dialog box should now appear.
4. Type in your computer name in the 'Computer' field.



5. Click **Connect**.
6. You will be prompted for your username and network password. When entering your username, make sure to include the domain. For example: main\firstname.lastname
7. You will now be connected to your office computer.

**Instructions (How to Disconnect)**

1. When you are ready to disconnect from the College network, simply right-click the Pulse Secure icon in the system tray (Windows OS), select the VPN Connection, and click **Disconnect**.



Mac users can disconnect by going to the Pulse Secure window and clicking **Disconnect**.

If you encounter any difficulties with Pulse Secure, please contact the ITS Help Desk at 281.998.6137 or [techsupport@sjcd.edu](mailto:techsupport@sjcd.edu)